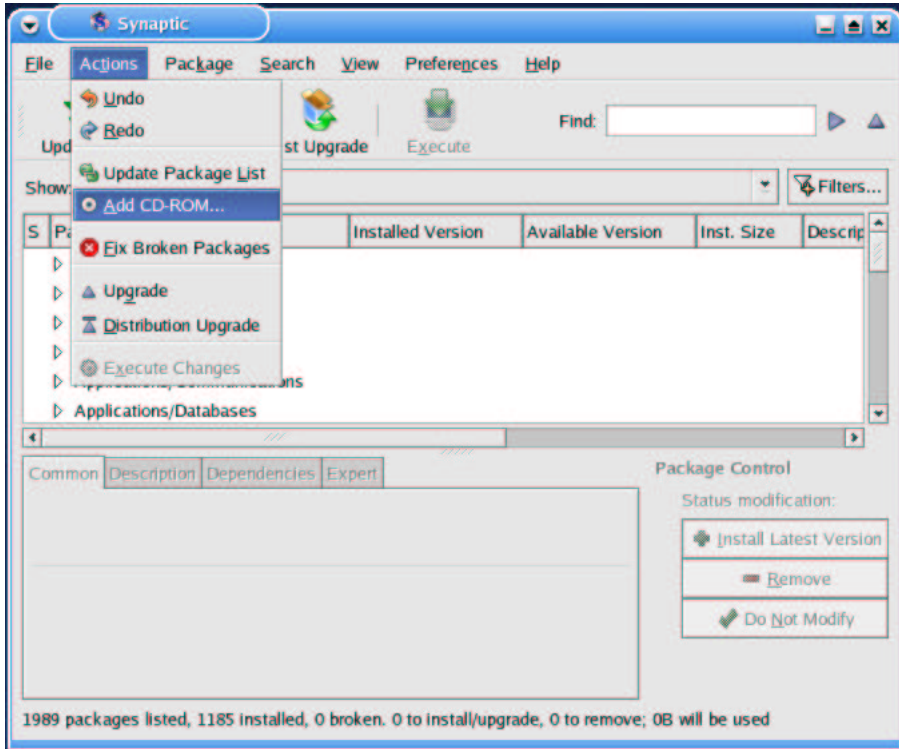


More settings are available in the KDE Control Center. Here you can already see the effects of Ceramic theme.

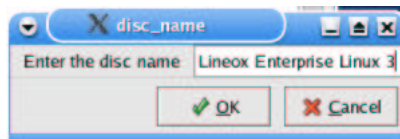
Installing, upgrading and removing programs

Lineox Enterprise Linux 3.0 uses `apt-get` as a packet manager. It resolves packet dependencies automatically. If you for example want to install package `foo`, which needs package `bar` to function and it is not installed, `apt-get` reports this and offers to install also `bar`. `apt-get` is command line program, but there is a graphical front-end to it called `synaptic`.

`apt-get` can also retrieve packages from the Internet from so called repositories. Lineox Enterprise Linux contains a version of `apt-get`, which has already some repositories defined. Lineox Enterprise Linux DVD disk must however be added manually before it can be used as a source of program packages.

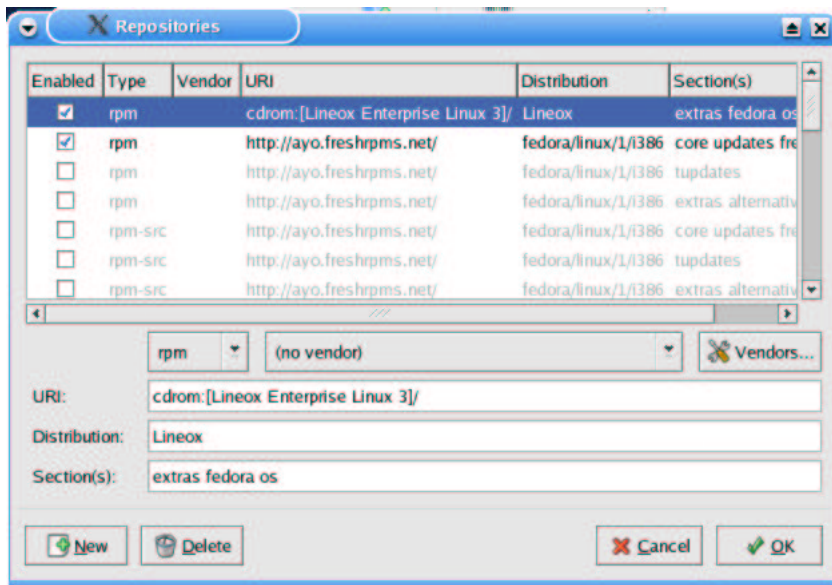


Adding Lineox Enterprise Linux DVD disk to synaptic

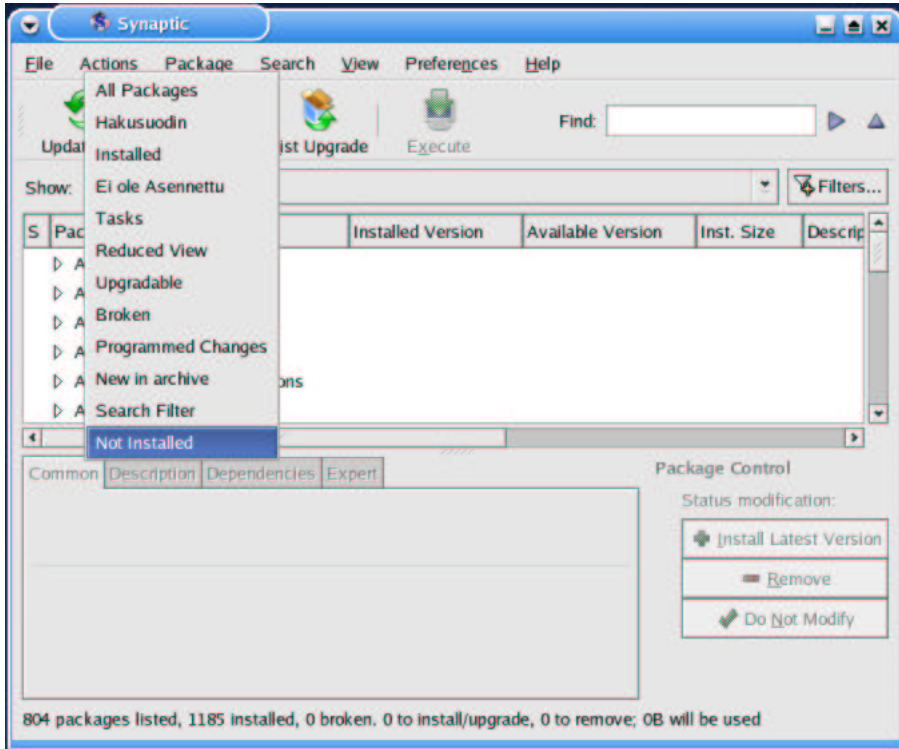


synaptic recognizes CD and DVD disks from each other and asks you to give a name to a newly added disk

Lineox Enterprise Linux 3.0 DVD disk has three subdirectories, which contain packages `apt-get` can install. The subdirectory, which is seen below with name `os`, contains all the packages of Lineox Enterprise Linux, the subdirectory `extras` contains packages for Red Hat Enterprise Linux and Red Hat 9 made by third parties, and the subdirectory `fedora` contains packages made for Fedora Project core 1. They all can be installed to Lineox Enterprise Linux 3.0, but fedora packages should be treated with caution and you may wish to remove it from the line called `Section(s)`.



Repositories defined for synaptic



You can get `synaptic` to show for example only not installed packages by clicking at the drop down menu called `Show` and by choosing a appropriate filter

Adding a swap file

If you didn't add a swap partition during installation or made it too small, you may want to add a swap file. You can get a report of current memory usage with command:

```
free
      total        used         free       shared    buffers     cached
Mem:    1032732    1016960     15772           0      124908     418900
-/+ buffers/cache:    473152     559580
Swap:   2096120     499356     1596764
```

You can see from the output above that this machine has 1GB real memory and 2GB of virtual memory. If there is very little free RAM as shown on the second number row (above there is over 0.5GB free RAM, which is plenty) and the last number on the last row is also small, you should make more swap space.